

WHAT TIME IS IT, PLEASE?



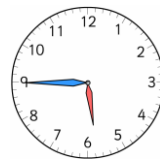
it is two o'clock



it is half past eight



it is quarter past ten

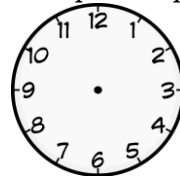
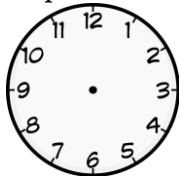
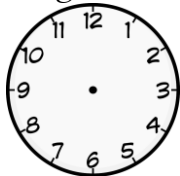
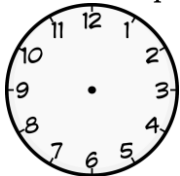


it is quarter to six



Draw the correct times on the clocks →

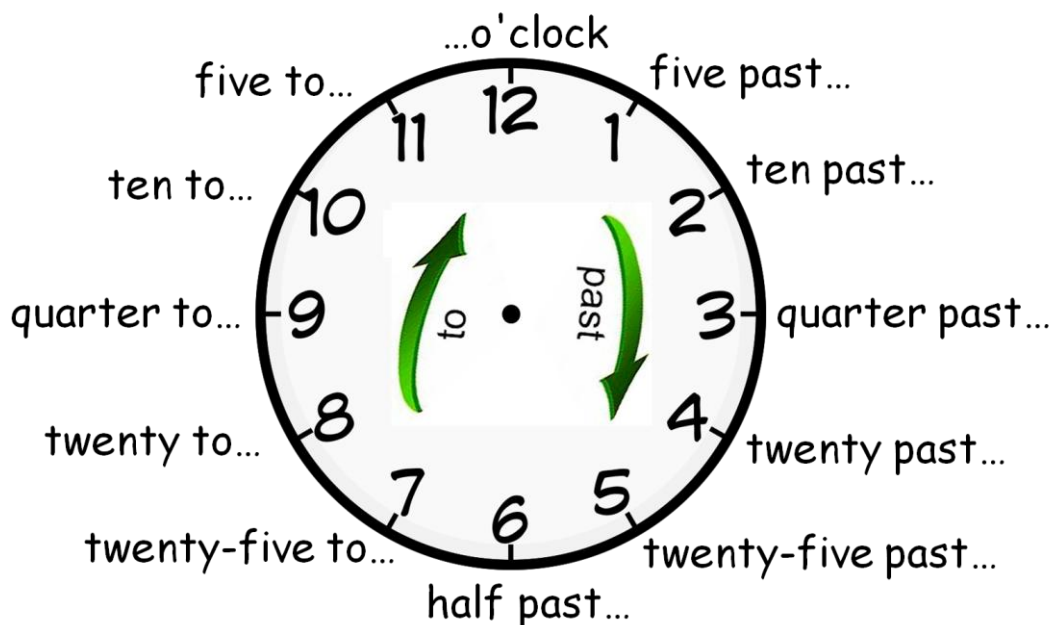
1. It is half past nine / 2. It is eight o'clock / 3. It is quarter to two / 4. It is quarter past three



Write the times →

5.00 / 1.30 / 3.45 / 10.15 / 6.30 / 11.15 / 6.45 / 6.00 / 10.30 / 5.15 / 7.45 / 4.45

TIME



Twelve clocks ! Write the times →



2:20



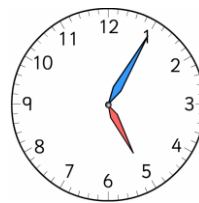
2:50



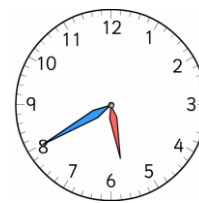
3:35



4:10



5:05



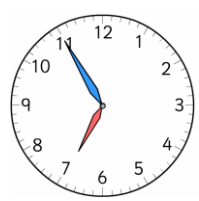
5:40



1:45



6:25



6:55



7:15



9:30



10:50